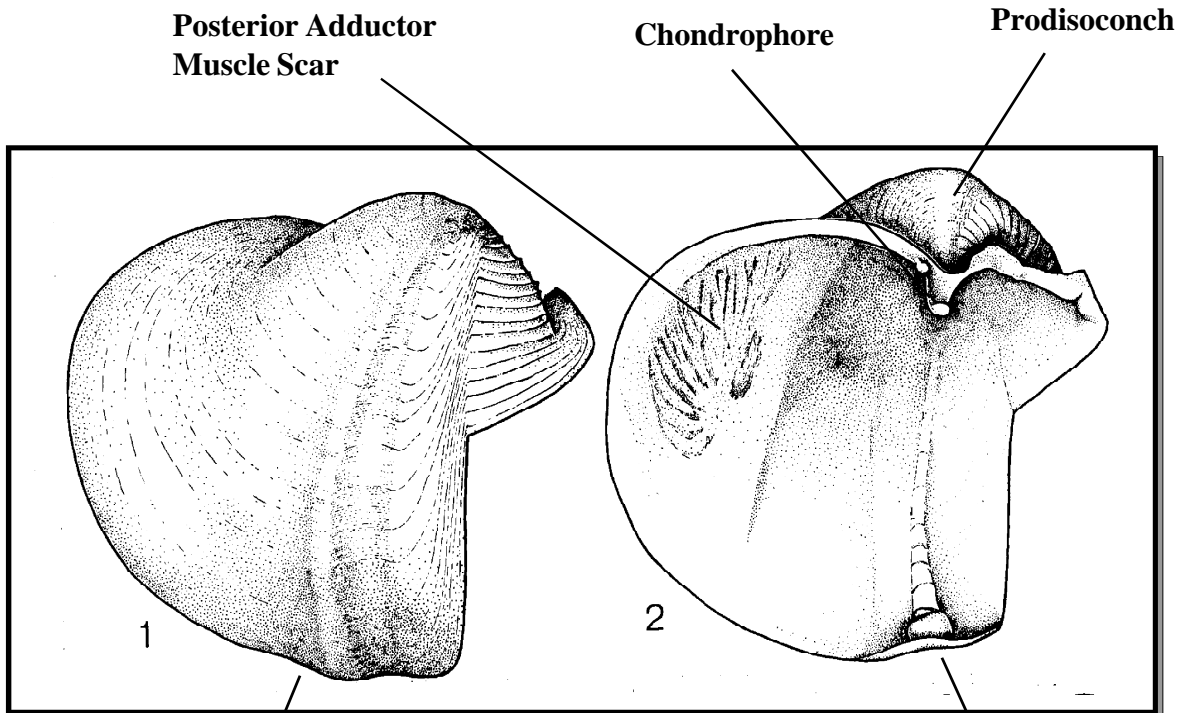


Notable Features

HOLOTYPE:

Ref. 275015

Harvard Museum of Comparative Zoology



Outer View
of Right Valve

5 mm

Inner View
of Left Valve

Measured size of this specimen
Length: 6.9mm Height: 6.2mm

Xylophaga whoi¹

New Species

TYPE LOCALITY: R/V *Atlantis*, station 3471, off Cardenas, Matanzas Province, Cuba (23 degrees 21 minutes North; 80 degrees 56 minutes West) in 500 fathoms (914 meters).

¹ An acronym from Woods Hole Oceanographic Institution whose research vessel *Atlantis* collected the holotype

Distinctive Characters

Mesoplax composed of two flat triangular plates with a short median line, set at a sharp angle to each other and with a large hollow tube extending outward from the posterior dorsal surface of each plate.

Description

Shell globose, reaching 7 mm in length and 6.2 mm in height, thin, fragile and with a very thin, light tan periostracum. Pedal gape angle about 95 degrees. Beaked portion of the anterior slope sculptured with numerous low denticulated ridges; the posterior portion with fine indistinct ridges. Umbonal-ventral sulcus only slightly impressed and irregularly sculptured. Sculpture on the disc and posterior slope consisting of pronounced growth ridges. Umbonal reflection narrow, closely appressed near the umbos, free and vertical anteriorly.